



the nest
al barari





Al Barari

Al Barari, derived from the Arabic word meaning 'wilderness,' is the region's first integrated luxury and active eco-conscious development. It is a unique destination where you can live, stay, play, shop, dine, and work. Strategically located in the heart of the city, this green community provides an environment that enhances wellness for both residents and visitors. Residents can immerse themselves in the abundant greenery, surrounded by sparkling waterways, creating a serene and rejuvenating atmosphere. With a proven track record of delivering projects with exceptional quality, Al Barari stands as a testament to luxury living and eco-conscious design. Experience unparalleled sophistication and serenity in this extraordinary home.



Strategically Located

DUBAI'S MOST DESIRABLE DESTINATION

Strategically located just a stone's throw from the city, this award-winning, eco-friendly development is a nature lover's dream. A quaint, eco-conscious neighbourhood, rich in culture, untamed beauty and untold stories, with over 15.3 million square feet of themed gardens, landscaped lakes and freshwater streams.

A mere 15 minutes from Dubai's most iconic destinations, including the Burj Khalifa, Dubai Marina, and Palm Jumeirah, Al Barari is an oasis that unites urban convenience with the serenity of nature.

| | |
|---------------|------------|
| BURJ KAHLIFA | 16 MINUTES |
| PALM JUMEIRAH | 22 MINUTES |
| CITY HOSPITAL | 15 MINUTES |
| DUBAI AIRPORT | 15 MINUTES |

- MEDICAL
- AIRPORT
- SHOPPING
- ENTERTAINMENT
- EDUCATION
- SUPERMARKET
- PARK



The Nest

Discover The Nest, an exquisite and exclusive haven in the heart of Al Barari, Dubai. This newly upgraded villa is a modern architectural masterpiece, boasting a volumetric design that creates a dynamic play of shadows on its angular elements. Its pristine white exterior contrasts elegantly with the lush greenery of Al Barari, making it a standout property.

Spanning three meticulously designed floors, The Nest is crafted to maximize comfort, luxury, and a seamless connection to the stunning natural landscape.

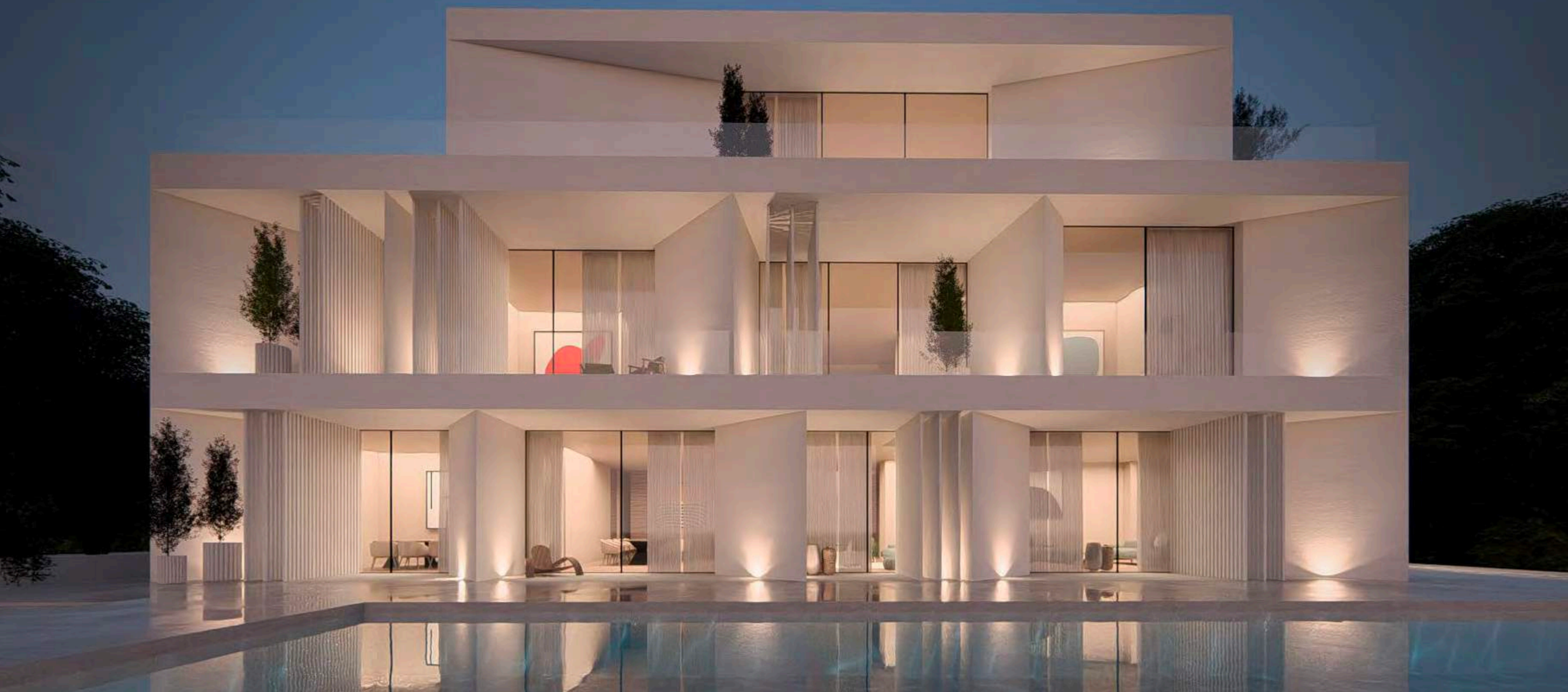
Experience unparalleled sophistication and serenity in this extraordinary home.

AL BARARI MASTERPLAN





The Nest in Al Barari seamlessly combines modern architectural design with functional living spaces, all while maintaining a strong connection to the lush natural surroundings. The use of angular elements and volumetric design not only adds to its aesthetic appeal but also creates a unique play of shadows, enhancing the overall living experience.



Ground Floor

Entrance

The Nest welcomes guests with a grand double-height entrance, creating an immediate sense of space and luxury.

Parking

Accommodates two cars, conveniently located near the entrance for ease of access.

Service Area

Includes utility rooms and staff quarters, ensuring that services are discreetly managed.

Guest Suite

A private and comfortable guest suite, ideal for visitors, ensuring privacy and convenience.

Powder Room

A well-appointed powder room for guests.

Living Areas

Kitchen

A modern, fully-equipped kitchen designed for both functionality and style, with high-end appliances and finishes.

Dining Area

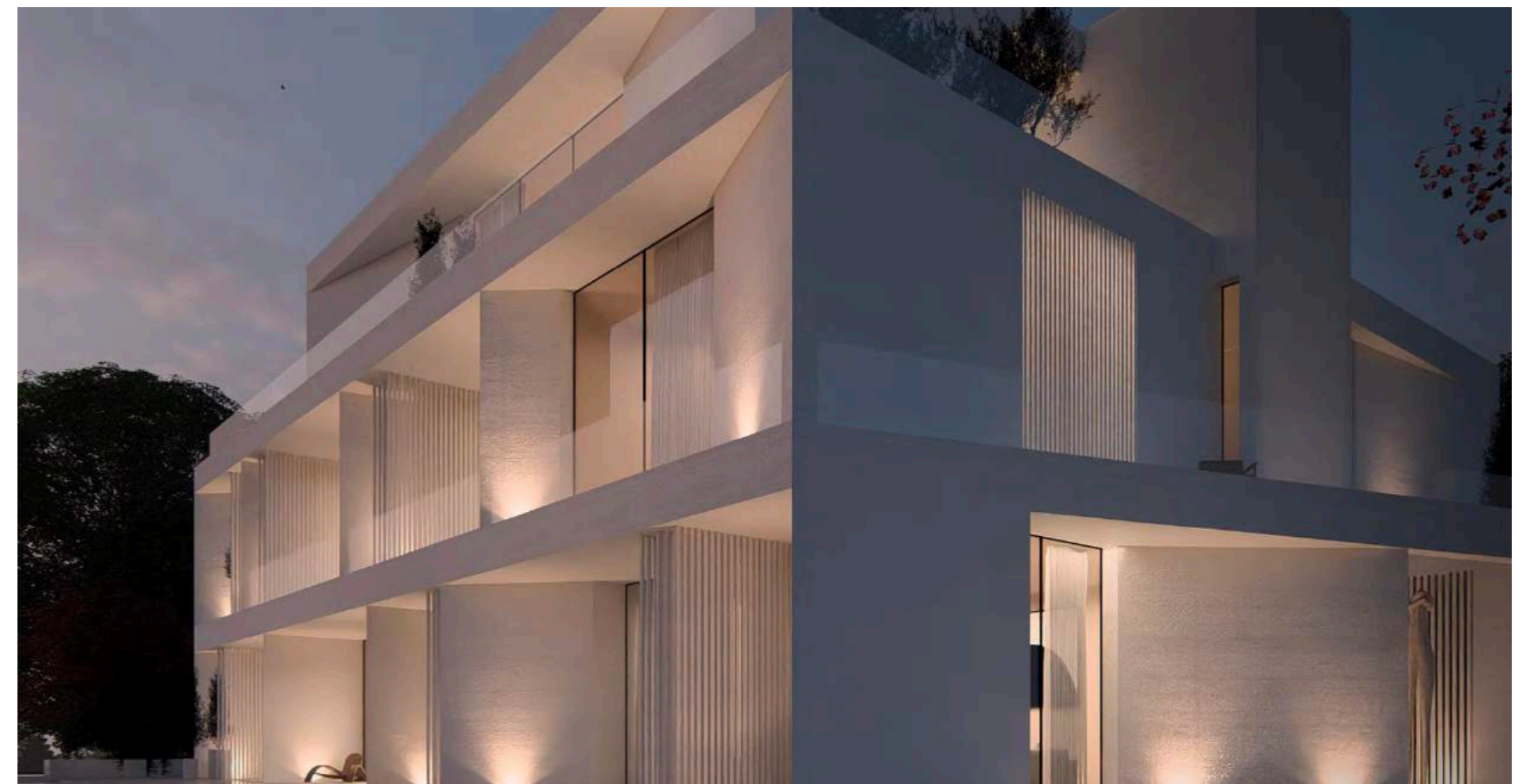
Adjacent to the kitchen, the dining area offers a sophisticated space for formal meals.

Formal Living Room

A stylish space for entertaining guests, with large windows that enhance the connection to the outdoor environment.

Family Living Room

A more casual, cozy area for daily family interactions and relaxation.





Outdoor Extension

Garden

A spacious garden that blends seamlessly with Al Barari's greenery, providing a serene outdoor space.

Pool

A large, inviting swimming pool, perfect for relaxation and recreation.

BBQ Area and Bar

Equipped for outdoor dining and entertaining.

Outdoor Shower

Adds a touch of luxury and convenience for pool users.

Softscape

Landscaping that continues the lush, green theme of Al Barari into the villa's private plot.



First Floor

Master Bedrooms

Four luxurious master bedrooms, each designed with modern comforts and aesthetics.

Ensuite Bathrooms and walk-in closets

Each bedroom includes a private, well-appointed bathroom and walk-in closet.

Outdoor Extensions

All bedrooms extend to private balconies or terraces, enhancing the living experience with outdoor views and fresh air.

Family Living Area

A central living space for the family to gather, offering a comfortable and intimate setting.



Rooftop

Lounge Area

A sophisticated lounge area designed for relaxation and socializing, with stylish furnishings and panoramic views.

Entertainment Area

Equipped with facilities for various entertainment options, ideal for hosting gatherings.

Rooftop Terrace

Extends the living space outdoors, providing a luxurious setting for enjoying the Dubai skyline and Al Barari's greenery.





















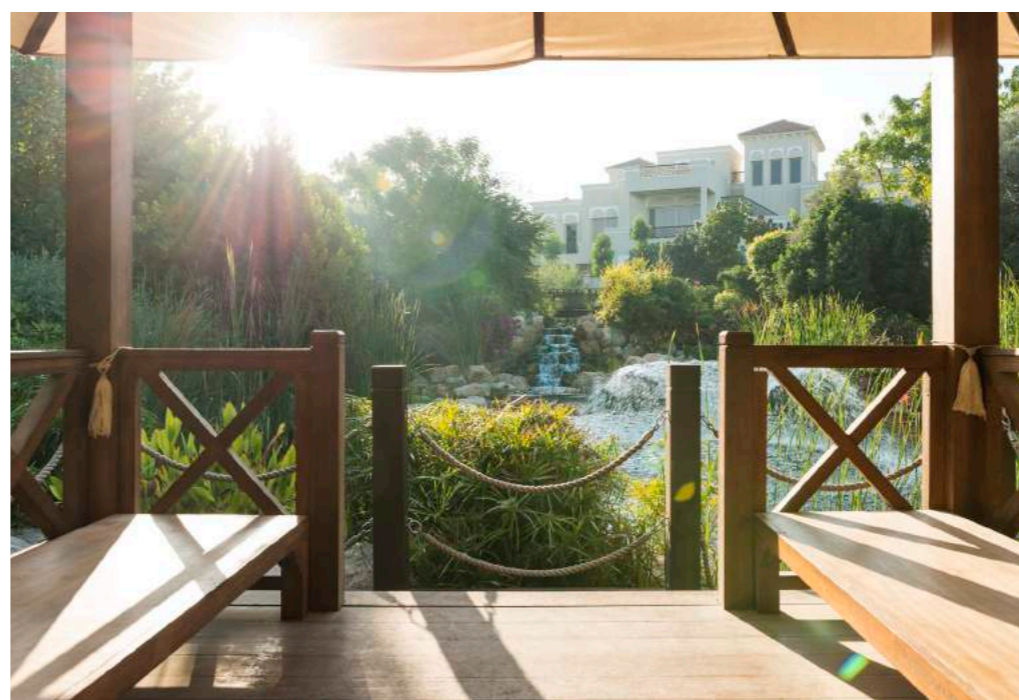
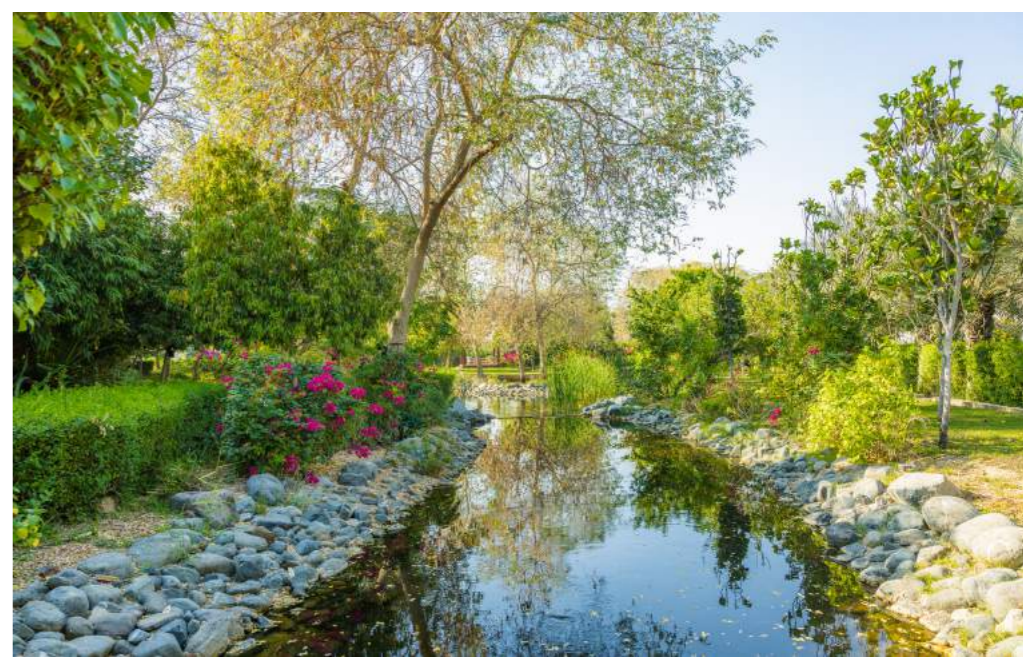
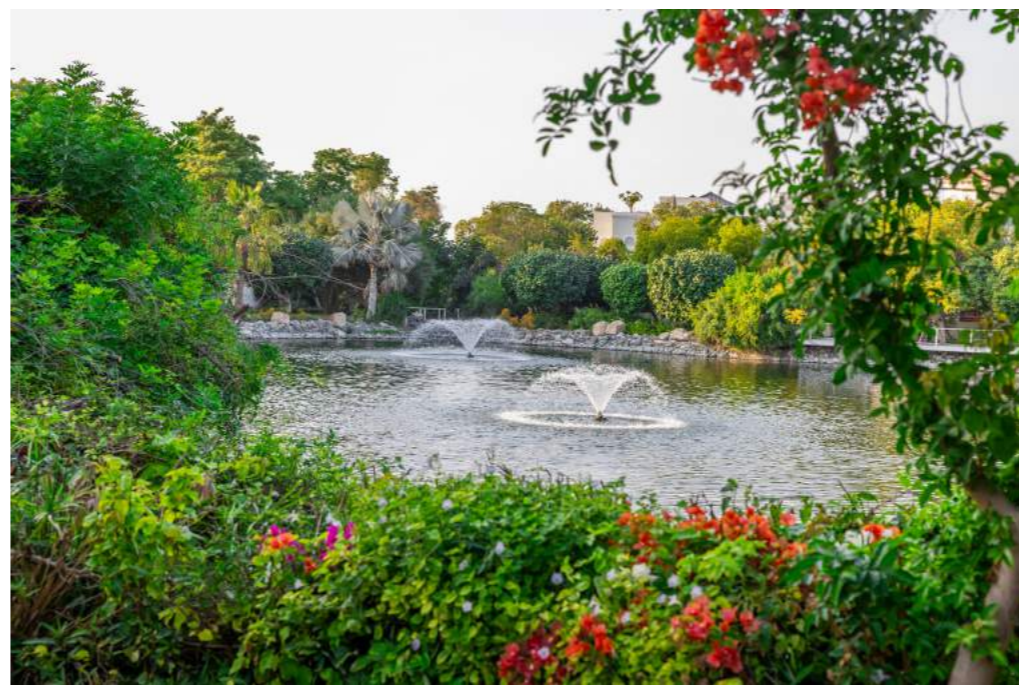
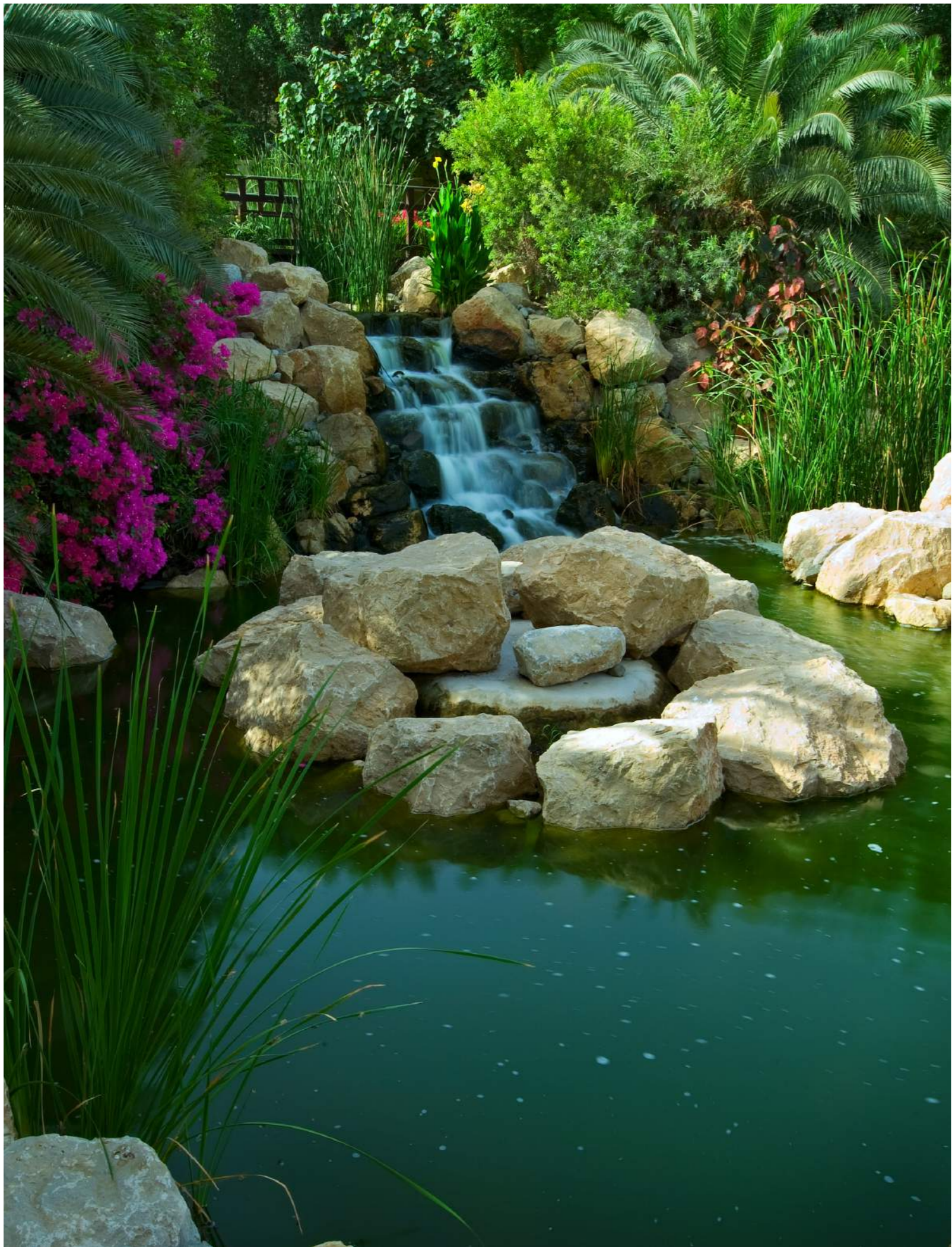
The Nest

Where luxury intertwines with nature's embrace.



A serene garden scene featuring a pond with large, smooth rocks. Tall, slender grasses with clusters of small, golden-brown flowers are in the foreground. The background is a soft, warm glow from a setting or rising sun, creating a hazy, golden atmosphere. The text is centered over the scene.

Al Bārari Gardens
A place to be at one with nature.





Amenities

With a unique fusion of wellness, recreation, and natural beauty, Al Barari offers a lifestyle where indulgence knows no bounds.







THE FARM RESTAURANT



BODY LANGUAGE HEALTH CLUB



AL BARARI PLAYGROUND



HIDEOUT BAR & RESTAURANT



HEART & SOUL SPA

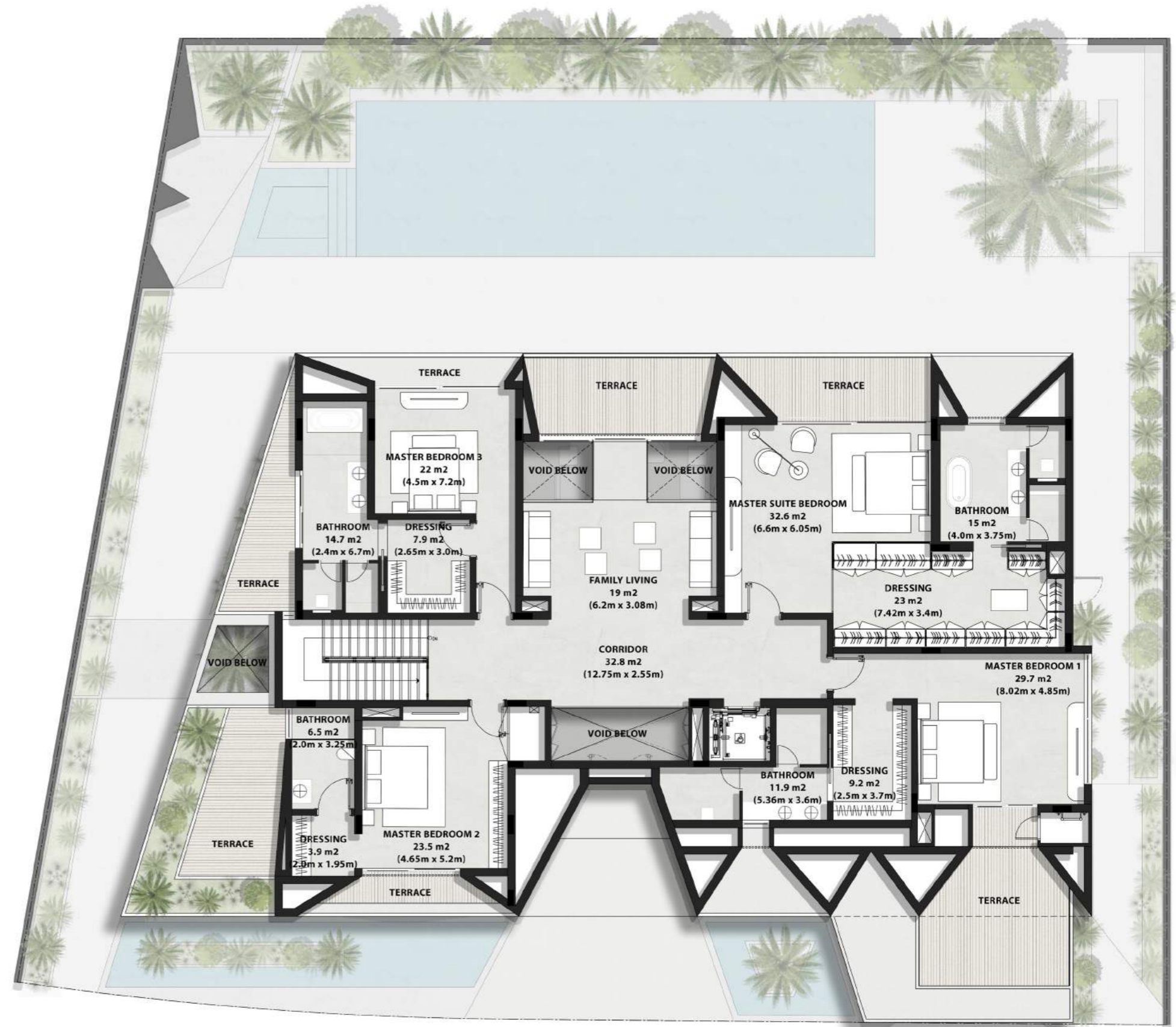


NATURE ESCAPES

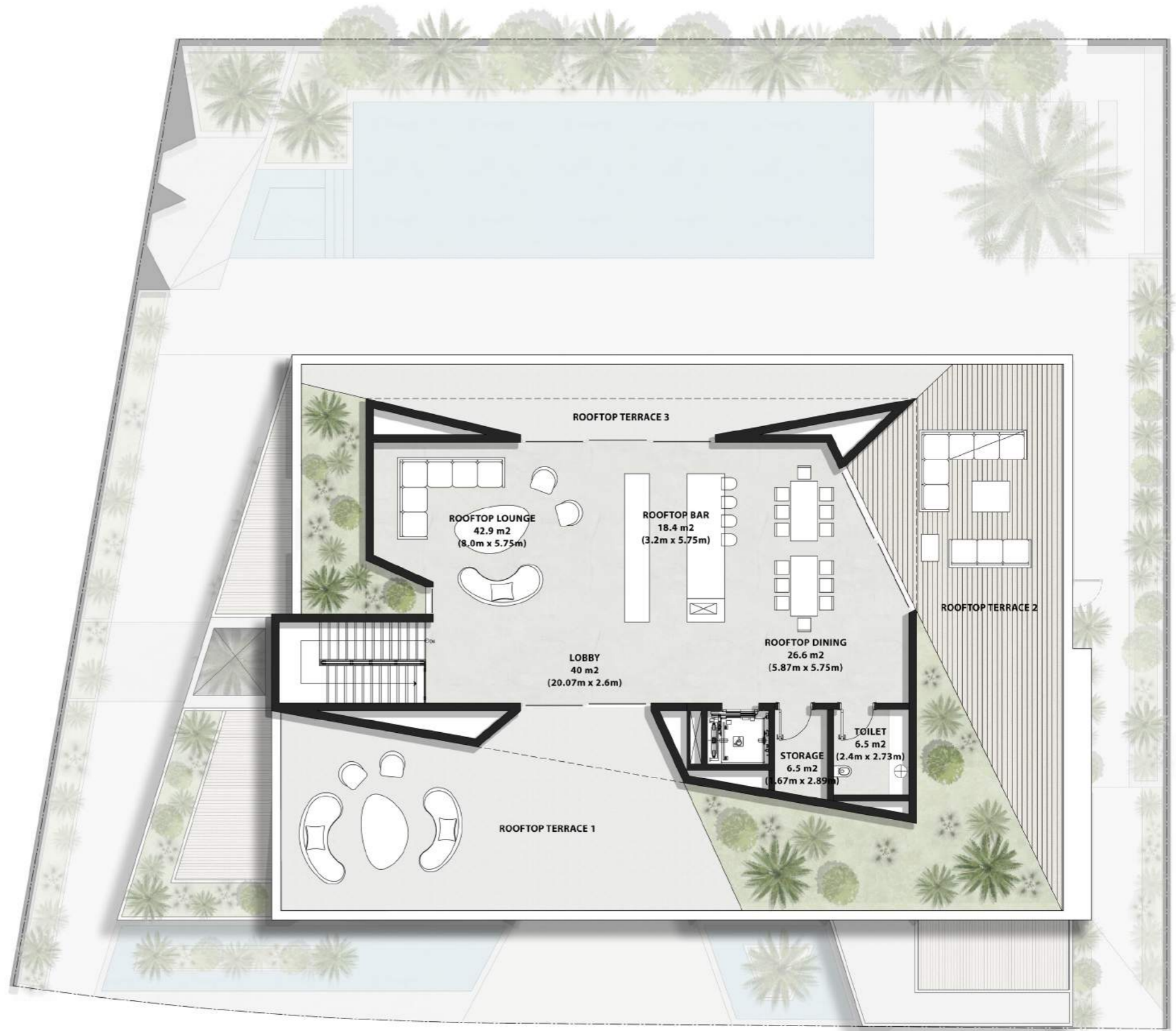
*Ground
Floor Plan*



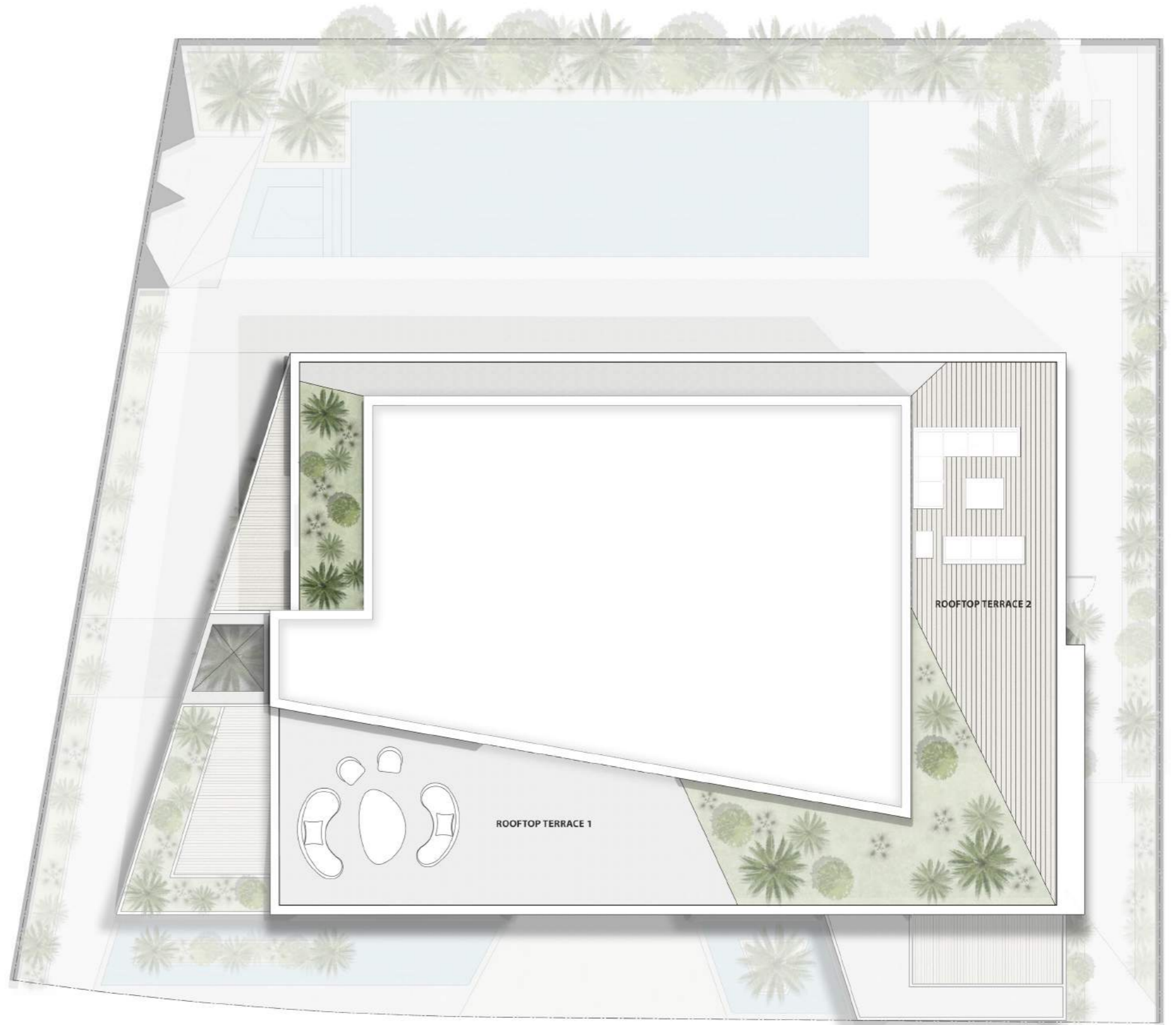
*First
Floor Plan*



*Second
Floor Plan*



*Roof Top
Floor Plan*





the nest
al barari

For sales enquiries

t.+971 4 388 6030 | +971 56 821 8111

e. sales@albarari.ae | www.albarari.com